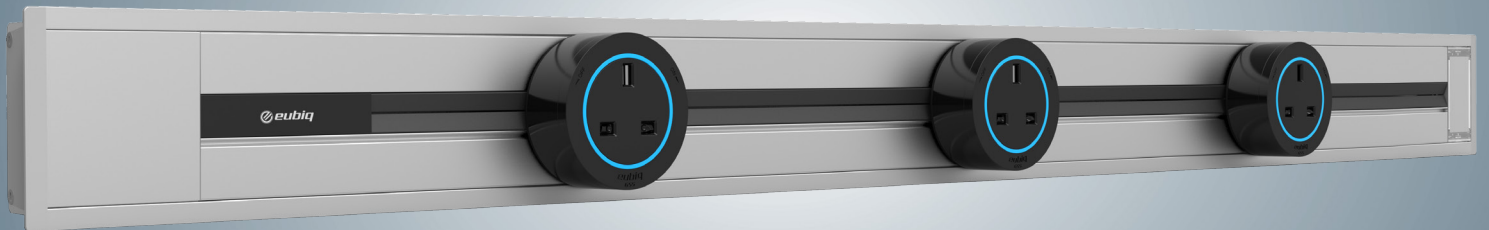




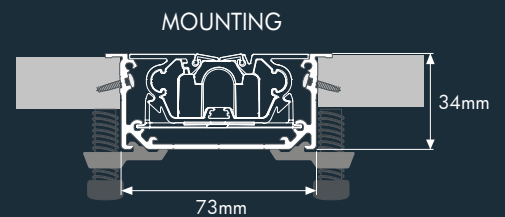
RH2

RECESS POWER
& DATA TRACK



RH2 RECESS POWER & DATA TRACK

- Based on GSS(Ground Sentry Spring) safety system.
- Direct fastening with screw or clamp for installation.
- Screw on wooden table or panel with a minimum thickness of 15mm.
- Clamp for glass or mable tops from thickness 5mm-34mm.
- Fits snap-on multimedia connectors (optional add-on).



SPECIFICATIONS

Model Number : PS-095-06-EU/BS3, PS-095-08-EU/BS3, PS-095-10-EU/BS3
PS-095-06-EU/BS4, PS-095-08-EU/BS4, PS-095-10-EU/BS4

MATERIAL

Profile Housing : Anodized Aluminium / Powder Coated
End Caps : Polycarbonate
Track Insulation : Polycarbonate
Standard colour : Silver
Track tap off unit standard color : BS3 - Black, Titanium; BS4 - Black

ELECTRICAL

Rated Voltage : 250V a.c. Single-phase
Rated Current : 13 Amp
Frequency : 50Hz / 60Hz

SIZE AND WEIGHT

Standard Length : 600mm, 800mm, 1000mm
Track Dimension : 80mm x 34mm
Weight : Estimated 2.2kg (1000mm)

WARRANTY

Power Track : 3 years, subject to Eubiq Limited Warranty Statement
Adaptor : 1 year, subject to Eubiq Limited Warranty Statement

EUBIQ PTE LTD

9 Joo Koon Crescent
Eubiq Building
Singapore 629025
Tel : +65 6372 9393
Fax : +65 6372 9399
Email : info@eubiq.com

www.eubiq.com

© 2018 EUBIQ PTE LTD, SINGAPORE.
Product specifications are subject to change without prior notice.